

Manual**system free-fall system for lifeboat D-FH.**

1 PARTICULARS

In this chapter the generalities of the life saving appliance above mentioned and of this manual will be given.

1.1 LAUNCHING APPLIANCE DATA

| | |
|-------------------------------------|--|
| davit system: | free-fall system for lifeboat |
| supplier: | Fr. Fassmer GmbH & Co |
| d-i reference no.: | 1604A |
| system type: | D-FH.50 |
| s.w.l.: | 50.0 kN |
| winch type: | 06.05.02 |
| s.w.l. on winch drum: | 21.5 kN |
| oil capacity gearbox: | approx. 2.6 l (see A3-3584) ¹⁾ |
| oil capacity hydraulic brake: | approx. 0.1 l |
| oil capacity hydraulic power unit: | approx. 90 l |
| hydraulic unit, pump type: | type B (see A3-3584) |
| craft to be launched: | lifeboat |
| type: | GAR-T 6,8 |
| make: | Fr. Fassmer GmbH&Co. |
| permissible capacity: | 22 persons |
| dimensions: | 6.82 * 2.35 * 1.06m |
| empty weight in equipped condition: | 32.5 kN |
| weight, fully equipped and boarded: | 47.5 kN |
| wire rope falls | |
| type: | PYTHON VDW 505, 1960N/mm ² |
| minimum breaking strength: | 188.5 kN |
| diameter: | 14 mm |
| length: | 50 m |
| starterbox type: | on deck |
| enclosure class: | IP 56 |

¹⁾ Oil bath lubricated winches, toothgear

Manual**system free-fall system for lifeboat D-FH.**

1.2 LIST OF ACCOMPANYING INFORMATION SHEETS

For a better understanding of the text in the several chapters the following documents have been inserted:

| Description | reference no. |
|--|---------------|
| boarding instruction plate (free-fall) | A3-1314 |
| boarding instruction plate (by falls) | G3-2166 |
| kinematic diagram winch 06.05 | A4-2329 |
| lubricant / oil recommendation | A3-3584 |

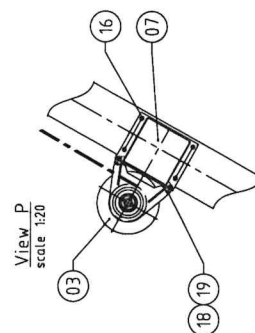
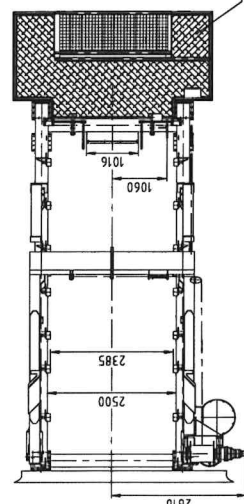
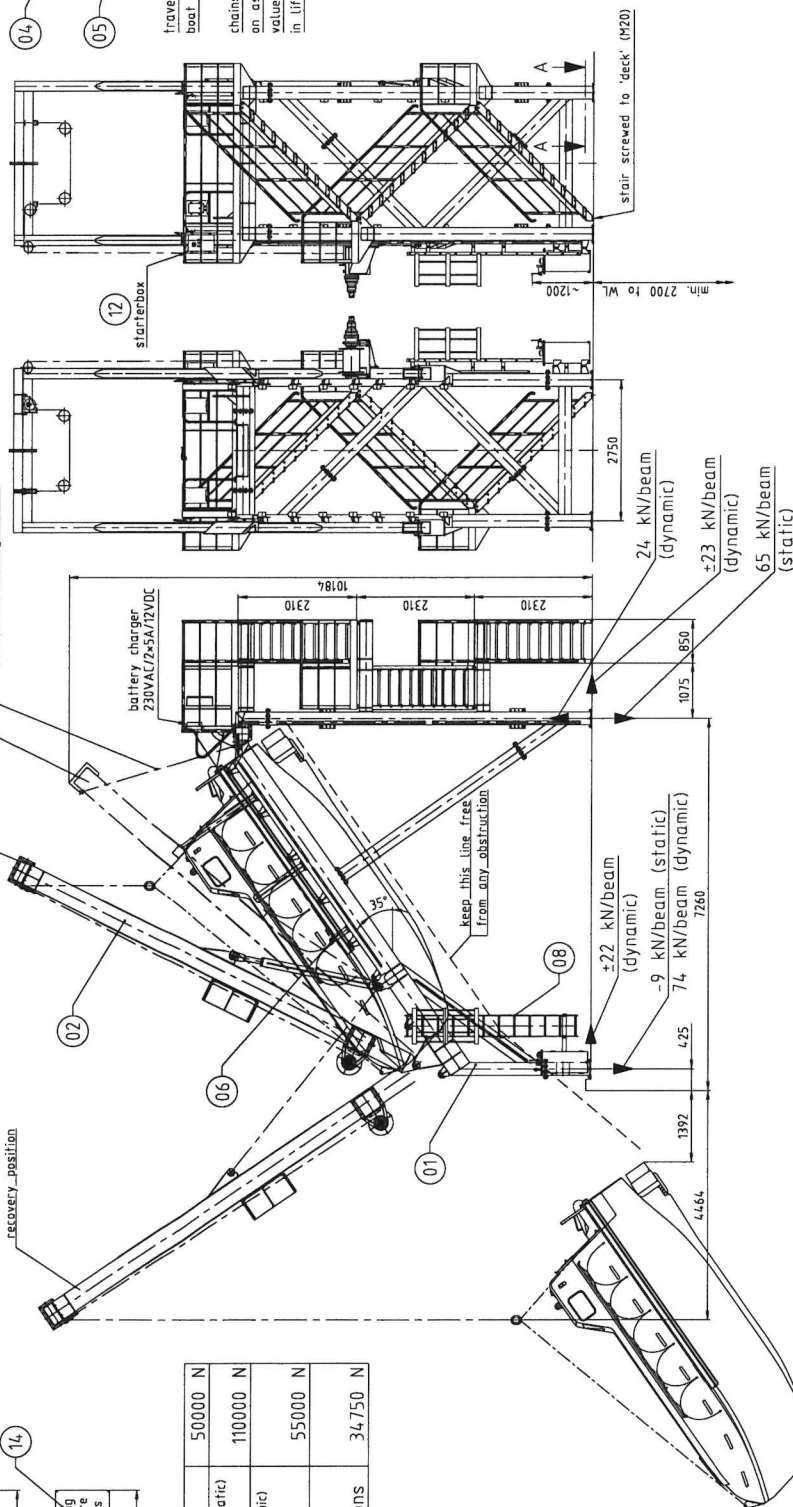
Manual**system free-fall system for lifeboat D-FH.**

1.3 LIST OF ACCOMPANYING DRAWINGS

For reason of simplifying the installation works, the boarding procedure and the maintenance the following documents have been inserted:

| Description | reference no. |
|---|---------------|
| arrangement and data for deckfoundation D-FH.50 | G1-2911 |
| arrangement winch, type 06.05 | A3-2988 |
| section winch 06 kNm | A1-1846 |
| arrangement traverse 14-16mm | G1-2226 |
| suspension 40 kN | A4-2444 |
| arrangement lashing GAR(T) 6,8 | G1-2914 |
| arrangement lashing unit GAR 6,0/6,8 | A2-2677 |
| hydraulic circuit diagram (power pack) | 12450-H1 |
| hydraulic power pack | 12450-M1 |
| electric circuit diagram | 112180 |

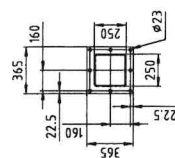
scale 1:10



| | |
|---|---------|
| S.W.L. | 5000 N |
| Workshop test (static) 2.2xS.W.L. | 11000 N |
| Board test (dynamic) lowering only 1.1xS.W.L. | 5500 N |
| Maximum load for hoisting Only 3 persons | 34750 N |

| BOAT DATA | |
|------------------------------------|------------|
| MAKE: | Fr. Fosner |
| TYPE: | GAR-T 6.8 |
| MAX. LENGTH | 6.82m |
| MAX. WIDTH | 2.35m |
| MEASURING HEIGHT | 1.06m |
| MAX. NR. OF PERS. | 20 |
| EMPTY WEIGHT | 32.5KN |
| HOISTING WEIGHT (with 3 pers.) | 34.75KN |
| LAUNCHING WEIGHT (fully loaded) | 47.5KN |

Section A-A
scale 1:20



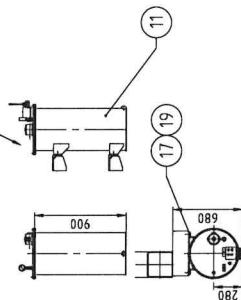
Each beam to be bolted to 'deck'
After bolting flanges to
be welded to 'deck'

For scope of supply, see order
sheaves and pivotpoints contain self-lubricated bushes which have to be greased prior to assembly

all separate delivered parts to be welded or mounted by yard (flange mounting see G4-1734)

wire rope $\phi 14$, Python VDWS05
tensile grade 1960 N/mm²
minimum breaking load 188.6 kN
one side pressed thimble (for s
DIN 3090, length 50 mm.

Detail hydraulic powerpack
scale 1:25

[illegible]